

HYUNDAI TRANSLEAD DRY VAN



The number one selling dry van trailer in North America.



Manufacturing excellence only Hyundai Translead can deliver.

Our commitment to manufacturing excellence continues to improve our operations, advance our technology, and drive innovation. With cutting-edge production processes and highly precise manufacturing quality, Hyundai Translead has become the number one dry van trailer manufacturer in North America.

Hyundai Translead delivers purposeful innovation and unmatched manufacturing. Our proven engineering strategies ensure quality and an effective solution to product evolution.



Longevity

Dry van trailers are built for longer service and use, while reducing total cost of ownership with longevity-focused features.

- Hot-dipped galvanized for greater protection
- Supplemental sealant added to floorboard joints to improve seal
- Industry-best warranty



Customization

Every customer and every order is unique. Hyundai Translead provides efficient and effective integration of customized solutions.

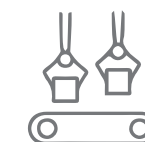
- Efficient manufacturing accommodates custom needs
- Built for your specific operations
- Custom solutions to ensure customer success



Durability

Structure and surfaces are strengthened and protected against everyday use, including damage from loading, unloading, and carrying freight.

- Enhanced structural integrity
- Protected corners and impact zones
- Snag-free interiors reduce wear
- IIHS ToughGuard-awarded RIG-30L bumper



Manufacturing & Materials

State-of-the-art manufacturing and ongoing investments in engineering and materials deliver stronger and lighter dry vans that improve efficiency.

- Automatic floor and semi-automatic wall assembly
- Onsite water testing
- Superior quality control and assurance
- Backed by Hyundai Translead



Hyundai Original®

The Hyundai Original can be custom built to meet the specific needs of your operation. Hyundai Translead is committed to customization and flexibility to give the customer the perfect fit.

STANDARD FEATURES:

- Hot-dipped galvanized components
- Inside height and rear door opening height of 110"
- Sealed wiring harness with internal ground
- Water and debris resistant tail light housing
- Easy operating door lock rods with rubber handle grips for operator comfort and safety
- Computer controlled machine riveting of sides and roof

Product Specifications		
Length	Exterior: 53' 0"	Interior: 52' 6"
Width	Exterior: 102.36"	98.5" lining-to-lining
Height	Exterior: 13' 6"	Interior: 110"
Capacity	68,000 GVWR	3,950 cu. ft. interior volume
Standard Wt.	13,510 lbs	



Standard wood lining with exterior grade plywood.



High strength side wall provides various options for different needs.



Structural components feature hot-dipped galvanization for corrosion resistance.



Hyundai HY-Cube®

Offers classic construction with greater interior width for optimal load capacity and double decking capabilities.

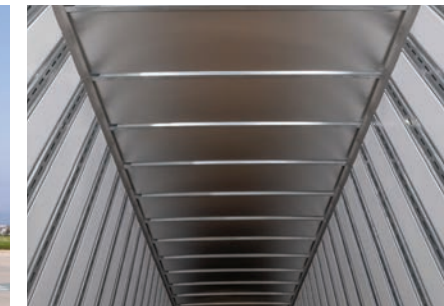
STANDARD FEATURES:

- Hot-dipped galvanized components
- Inside height and rear door opening height of 110"
- Sealed wiring harness with internal ground
- Water and debris resistant tail light housing
- Easy operating door lock rods with rubber handle grips for operator comfort and safety
- Computer controlled machine riveting of sides and roof

Product Specifications		
Length	Exterior: 53' 0"	Interior: 52' 6"
Width	Exterior: 102.36"	Interior: 101" lining-to-lining
Height	Exterior: 13' 6"	Interior: 110"
Capacity	68,000 GVWR	4,050 cu. ft. interior volume
Standard Wt.	13,855 lbs	



Rear frame has 0.19" thick hot-dipped galvanized steel construction with low profile header, tube shaped posts.



HY-Cube's wider interior and larger volume allows increased freight capacity and efficient operations.



High impact resistant HDPE panels between slotted logistic posts snap in for ease of repair.



Hyundai Composite® & Composite XT®

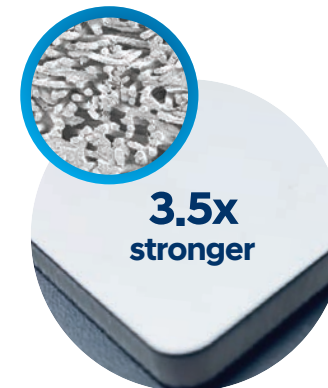
Delivering the same strength at a lighter weight, the Composite and Composite XT dry van is constructed with durable composite sidewalls.

STANDARD FEATURES:

- Hot-dipped galvanized components protect against harsh elements and damage
- Durable composite sidewalls allow quick and easy replacement of individual side panels without removing the stiffeners
- Composite XT has 16" exposed height extended scuffs for increased stiffness and resistance.
- Smooth interior walls offer snag-free loading and unloading, reducing freight damage and trailer wear.

Product Specifications: Composite & Composite XT

Length	Exterior: 53' 0"	Interior: 52' 6"
Width	Exterior: 102.36"	Interior: 101.5" above side scuff, wall to wall
Height	Exterior: 13' 6"	Interior: 110"
Capacity	68,000 GVWR	4,070 cu. ft. interior volume
Door Opening	110" Height	99" Width
Standard Wt.	13,350 lbs	
Standard Wt.	13,460 lbs (Composite XT)	



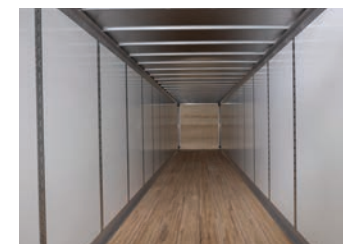
L-Core Panels

The optional L-Core Panels from Hyundai Translead are all about the core. These panels improve upon the standard foam core with a polymer core that is 3.5x stronger, while dramatically reducing weight with a thinner galvanized steel skin layer. With greater heat resistance and rigidity, these panels are more durable.



Efficiency & Savings

Hyundai Translead's Composite Dry Van with L-Core panels lead the industry in efficiency and cost savings.



The sidewall configuration allows for improved overall stiffness of the assembly and easier maintenance. The smooth interior sidewalls reduce possible snagging in the trailer for greater freight protection.

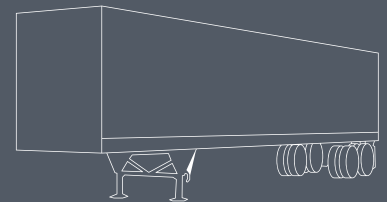


Composite XT: The 16" integral scuff offers a smooth surface to prevent freight snagging and ribbed protection against pallet damage to the sidewall rivets as well as adding strength to the trailer body.



Learn more about all Hyundai Translead Dry Van Trailers

Visit hyundaitranslead.com/product/dry-van/



Original*



HY-Cube*



Composite*



Composite XT*

Backed by Hyundai Translead

Hyundai Translead provides customers with high-value products, services, and care, empowering them with knowledge, insight, and control synchronized to the speed of their business.

